



St Leonard's College

FOUNDATION

Supporting an education for life

Building Towards Our Future



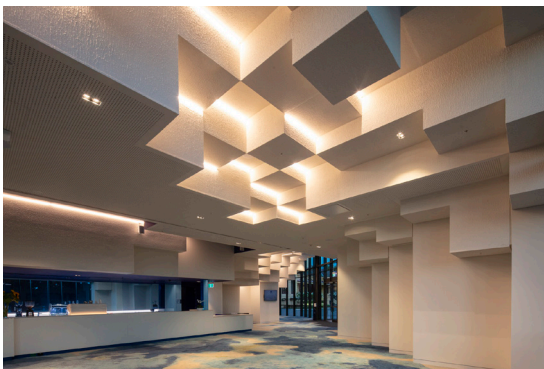
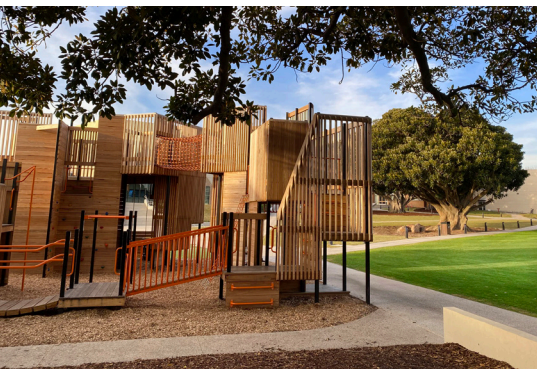
Your Contribution to The Building Fund

For over 100 years, St Leonard's College has been able to realise its building development programs thanks to regular donations to the Building Fund made in conjunction with the payment of school fees, and in addition to our community's kind support of our capital raising campaigns, such as our most recent Inspiring Innovations project.

The community spirit conveyed by our parents, past and present, our staff and alumni, enables our students to thrive in best practice learning environments that support all aspects of their growth and development. Your contributions to the Building Fund support the College in fulfilling its vision of providing 'an education for life' for current and future generations of Leonardians.

Throughout our history, we have sought to keep abreast of learning innovations and to provide environments in which learning is unencumbered. Today, our students enjoy well-equipped STEM laboratories, separate Junior, Years 5 and 6, Middle and Senior Schools, outstanding music and sports facilities, while the medical centre and cafeterias further provide for their well-being.

Our Inspiring Innovations development is a remarkable example of the College's vision combined with the generosity of our community's donations to the Building Fund. Opened in mid 2020, our new world-class Leonardian Centre has been designed to showcase our vast array of College events. The auditorium has flexible acoustic technology and has been carefully designed to accommodate multiple performance types, hosting both theatrical and musical performances, as well as awards nights, debating, assemblies, staff professional learning forums, seminars and many other events. The venue is complemented by a half fly tower housing a professional rigging system for curtains, lights and scenery, along with an acoustic control room and orchestra pit. The Leonardian Centre features a small outdoor stage which caters to intimate outdoor

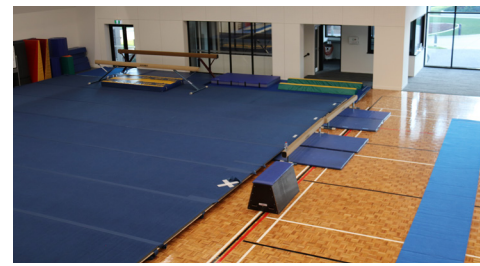


performances and a screen located directly above it which can telecast events happening within the auditorium. This state-of-the-art centre features a light filled foyer that provides a stand-alone venue that is regularly utilised for a variety of purposes, from student art exhibitions through to staff events, in addition to serving as an impressive entry point for our music and theatre productions. The Leonardian Centre also houses two new STEM laboratories in the lower level. The Inspiring Innovations development was the most significant capital raising project in our College's history. In addition to the Leonardian Centre, the development encompassed our new purpose-built year 12 learning centre, Merton, which opened in January 2020, and features 11 break out learning spaces, nine collaborative study nooks, a tertiary style lecturette and a collaborative community space. The

development also included our new Senior School cafeteria and central agora, supporting a highly connected College community.

2020 also saw the redevelopment and enhancement of all outdoor sports courts, as well as the introduction of multipurpose sports courts beside the Hawkes Sports Centre and a new dedicated basketball court within the years 5 and 6 outdoor area. Our outstanding sports facilities were also enhanced in 2021 with the completion of our Kevin Wood Centre redevelopment including a new sprung floor to facilitate our gymnastics and aesthetic sports program and a new upper level equipped for table tennis.

In early 2019, the completion of our McMillan House redevelopment facilitated a new STEM laboratory,



and the relocation and expansion of the Junior School library with purpose-built study nooks throughout the corridors along with dedicated open reading spaces. The new library also features a dedicated amphitheatre for teaching, and the overall layout encourages students to browse and borrow with its unrestricted access as students pass through it to access other areas of the Junior School.

Prior to this, our Learning Futures project saw the completion of the Cornish Library, Year 9 Centre and TC Woolhouse drama theatre in 2017.

The Year 9 Learning Futures Centre provides a dedicated space for students to engage in pastoral sessions, collaborative learning, and further explore the domains of the CUE program.

The Cornish Library features distinct spaces for independent study, wide reading and collaborative work, as well as retaining the breadth of the previous library's collection - all in a modern, modular and technology-rich environment.

The completion of the vibrant, purpose-built drama and theatre hub included a lighting rig, sound desk, mirrors and costume store, providing our students with hands-on stagecraft experience and flexible performance spaces.

Our Visual Arts Centre, completed in 2016, provides outstanding learning spaces for our students to



explore their creativity in the Contemporary and Fine Arts, Visual Communications and Design, Textiles, Media and more.

We are most grateful to all those who have supported our Building Fund projects through their donations to the Building Fund.

It is important to note that voluntary Building Fund contributions are not for general maintenance of buildings and/or grounds, and are tax deductible.

Please consider making a regular gift to the fund as part of your fees payment each term.

Jen Neate
Chair - St Leonard's College Foundation



St Leonard's College

FOUNDATION

Supporting an education for life